



## SnapShot/32

**SnapShot/32** brings professional quality, convenient Windows 95 and NT screen captures to your fingertips. It was designed for ease of use, with powerful and useful features to aid the professional as well as support the needs of the occasional user. Use it just a few times — you'll find it to be indispensable.

Click the button above to move immediately to the [QuickHelp](#) screen to review each of the many features it offers. Some of the more impressive features are listed here. Click on any button for more details.

- Choose your own HotKeys** that quickly capture the entire Desktop, any Rectangle you outline, or the highlighted Window or Client, and **automatically repeat the capture** every x seconds or by using another HotKey.
- Automatically save each of your captures to a file** by default — you can even trigger new captures every x seconds and have the filename incremented.
- Save your image** as either a [BMP](#) or [GIF](#) file. GIFs can optionally be interlaced, and **SnapShot/32** will create GIFs with transparent backgrounds, perfect for World Wide Web page use.
- Print your capture direct from SnapShot/32** — it will expand the image to the size of the paper and margins that you set, and even add a frame, reverse, or reduce the output to black and white!
- Include the cursor image in your capture** for a special look few capture programs can bring to you.

For complete information on all that **SnapShot/32** brings to you, use the [QuickHelp](#) button above for an image of all the menu options, or choose the [QuickReference](#) alphabetical listing of the same information.

For **customer service** and **support** information, please [click here](#).  
For **Registration** information, please [click here](#)



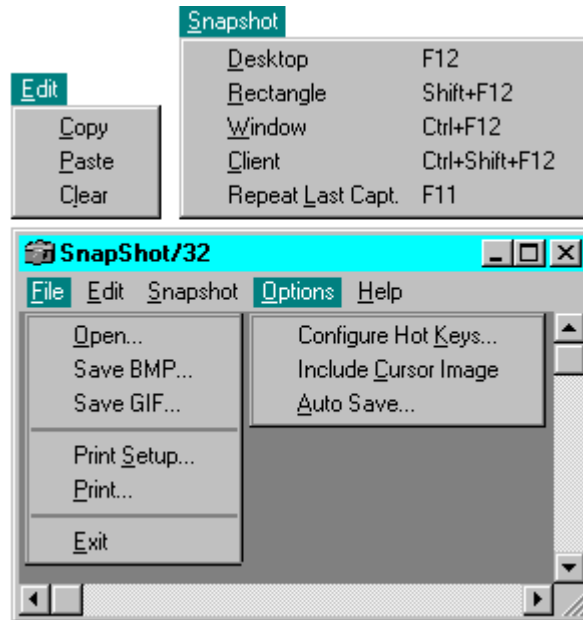
## SnapShot/32

This graphic will conveniently tell you everything you need to know about SnapShot/32's many features.

It serves as both as a quick introduction to all SnapShot/32 can do to make screen captures easier, as well as an ongoing reference when it is required.

Each drop-down menu is included here. Simply click on any menu selection for a complete explanation of the function it accesses.

**TIP:** There's more to SnapShot/32 than meets the eye. Be sure to check out each menu item to find some of the most useful features.



## SnapShot/32

**Click on any command for a quick explanation of its function.**

**Auto Save**

**Clear**

**Client (Snapshot)**

**Configure Hot Keys**

**Copy**

**Desktop (Snapshot)**

**Include Cursor Image**

**Open**

**Paste**

**Print Setup / Print**

**Rectangle (Snapshot)**

**Repeat Last Capture**

**Save BMP**

**Save GIF**

**Window (Snapshot)**



## Open

Open a GIF or BMP file.

## Save BMP

Save your capture as a BMP file.  
The standard Windows save dialog  
allows you to choose your target  
directory

## Save GIF

The standard Windows save dialog allows you to choose your target directory. You may also click on two checkboxes to save your GIF file as:

**Interlaced**, to “fade in” when used on the World Wide Web

**\*Transparent Background**, to allow your background color or bitmap to display behind your graphic when used on the World Wide Web

*\*This function is only available in registered versions of [SnapShot/32](#). To register, select the “Register” item from within the “Help” menu*

## Print Setup / Print

Choose from several setup options and print your capture from these menu items.

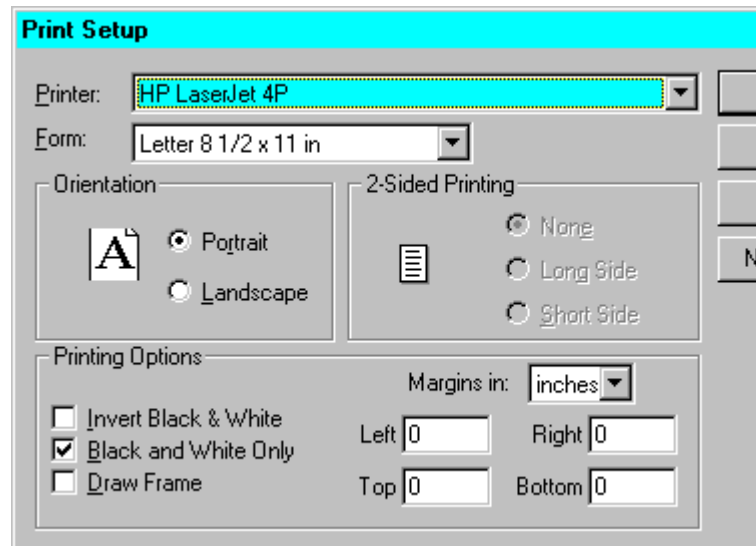
**SnapShot/32** will automatically expand the size of the image to fill the size of the paper within the margins specified.

Select from **Portrait** or **Landscape** orientations.

**Invert Black & White** is a great option for creating eye-appealing negative transparencies of screen shots

**Black and White Only** eliminates greyscales for a cleaner look in some instances.

**Draw Frame** adds a thin line frame around the image for that finished look.



The screenshot shows the 'Print Setup' dialog box with the following settings:

- Printer: HP LaserJet 4P
- Form: Letter 8 1/2 x 11 in
- Orientation: Portrait (selected)
- 2-Sided Printing: None (selected)
- Printing Options:
  - Invert Black & White:
  - Black and White Only:
  - Draw Frame:
- Margins in: inches
- Left: 0, Right: 0, Top: 0, Bottom: 0

**Specify Margins** in inches, cm, or mm measurements for all four sides of your captured image.

## Copy

Copy the current capture to the Windows clipboard



## Paste

Paste the contents of the Windows clipboard into [SnapShot/32](#).

## Clear

Clear the current capture  
from [SnapShot/32](#).

## **Desktop (Snapshot)**

Click to capture the entire desktop (all you can see on the screen)

## **Rectangle (Snapshot)**

When clicked, a cross cursor (+) will appear.

Click with your left mouse button where you want to start the capture area, and then release it. Drag the outline to enclose the area you want to capture, and click the mouse button again.

You can abort the function at any time by clicking on your right mouse button.

**TIP:** [See Configure Hot Keys](#)

## Window (Snapshot)

When clicked, a cross cursor (+) will appear.

Move to the Window you want to capture, and click with your left mouse button.

The entire Window, including the title bar and borders will be included.

Click your right mouse button to abort this function.

**TIP:** If your capture includes only a sub-window within a Window you want to capture, try clicking on the title bar or frame of the Window you want.

**TIP:** [See Configure Hot Keys](#)

## **Client (Snapshot)**

When clicked, a cross cursor (+) will appear.

Move to the Window you want to capture, and click with your left mouse button.

Only the inside area of the Window you choose will be captured. The title bar and borders will be omitted.

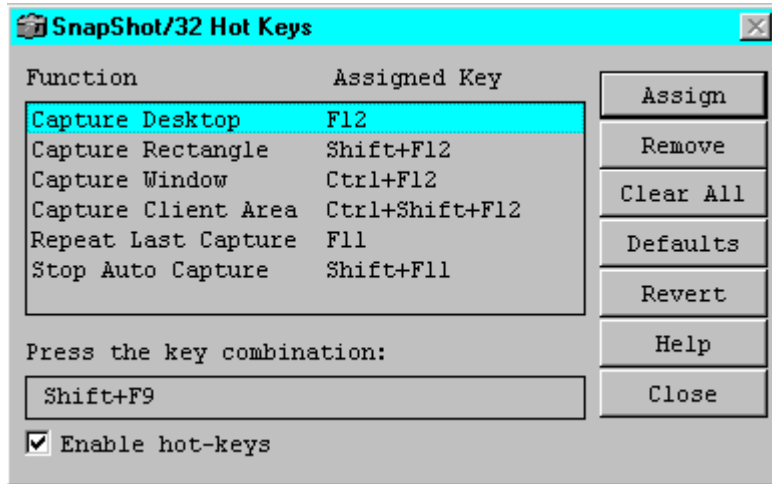
Click your right mouse button to abort this function.

**TIP:** [See Configure Hot Keys](#)

## Configure Hot Keys (Snapshot)

Hot Keys is a convenient feature of [SnapShot/32](#). Even when minimized, the program stands ready to accept your hot key combination to immediately capture a screen!

The Hot Keys (keyboard shortcuts) for screen captures can easily be customized to your preference.



**Assign** takes your keyboard input and assigns it to the highlighted function

**Remove** deletes the Assigned Key (Hot Keys)

**Clear All** deletes all Assigned Keys (Hot Keys)

**Defaults** returns all Assigned Keys to their original states

**Revert** returns all Assigned Keys to the assignments that were in effect when you opened the dialog

**Enable hot-keys** turns the function on and off

Highlight the function you wish to change, and then locate your cursor in the “Press the key combination” box. Execute the key combination you want for that function, and then click on Assign. Your new Hot Key assignment will also be shown in the [SnapShot/32](#) menu option.

**TIP:** Be sure not to assign Hot Key combinations that might conflict with another program. To prevent any problems with specific programs, you can temporarily disable [SnapShot/32's](#) hot keys in the dialog shown above.

## Include Cursor Image

You may optionally include the image of your current cursor in your capture.

**TIP:** Use the cursor to highlight a point of interest in your capture. [SnapShot/32](#) can capture some cursors that were previously thought invisible to all such programs. But, due to differences in the way cursors are handled by some programs, there are those which produce unpredictable results. In Windows 95, only the standard set of cursors is captured, plus those defined by applications. In Windows NT, the cursor shape may be incorrect if it is within the console (DOS Prompt) window.

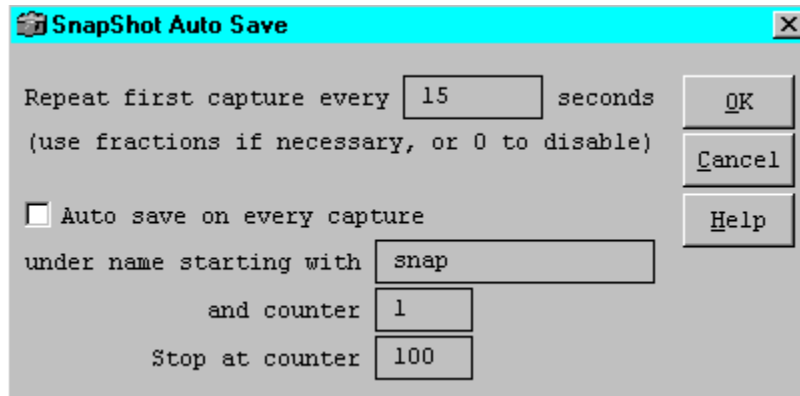
*This function is only available in registered x versions of SnapShot/32. To register, select the "Register" item from within the "Help" menu.*



## Auto Save

You can use the Auto Save feature in two ways:

Check the “Auto Save on every capture” check box, and [SnapShot/32](#) will now wait for you to make the first screen capture. It will then minimize, and whenever you press the “Repeat Last Capture” Hot Key, it will capture the current state of the same screen area you originally defined and save it to a file name you choose, incrementing the number.



If you enter a number (other than zero) in the “Repeat first capture every [ ] seconds, and check the “Auto save on every capture” option, [SnapShot/32](#) will automatically produce and save a screen capture of the original area you defined until you tell it to stop, using the “Stop Auto Capture” hot key.

**TIP:** These [SnapShot/32](#) functions are great for producing graphics for manuals or other instructional materials, to show and teach a series of steps within a program window. Include the cursor for extra emphasis on specific areas.

## Repeat Last Capture

Use this menu item or Hot Key to quickly repeat the last capture executed.

**TIP:** [See Configure Hot Keys](#)



SnapShot/32

Support for [SnapShot/32](#) is close at hand. An e-mail message will get the quickest response. Be certain to provide as much background information as possible.

We also welcome your comments and input for future releases of [SnapShot/32](#).

e-mail: [gregko@kagi.com](mailto:gregko@kagi.com)

Greg Kochaniak  
3146 Chestnut Street  
Murrysville, PA 15668, USA



## SnapShot/32

Register your copy of **SnapShot/32** by selecting "Register" on the button bar above, or from within the help menu. This program is a 'try before you buy' shareware program that relies on your support for continued development, and single user registration is only \$20.00. When you register **SnapShot/32** you will receive a code that enables additional features and become eligible for priority support. You will also be able to obtain free updates of the program through our Web page (address below) with which you can use your registration code, until the next major release.

To register copies of SnapShot/32 please use the "Register" program usually provided with SnapShot/32 to make payments. You can click on "Registration" in the button bar above to access it. We use KAGI SHAREWARE registration service, which accepts different payment methods, including credit card and invoices. If you live in US or Canada you may also mail me your check or money order directly, payable to Greg Kochaniak.

Greg Kochaniak  
3146 Chestnut Street  
Murrysville, PA 15668, USA

e-mail: [gregko@kagi.com](mailto:gregko@kagi.com)  
<http://198.207.242.3/gregko/gregko.htm>

### License cost:

Single licenses: \$20 each

Site license: \$500

(Site licenses cover a single organization for an area of up to one hundred miles (160 km) in radius.)

World-wide license: \$1500

